

BPX BARPRO X

"BPX crafts quality tools with passion for All"
"BPX crée des outils de qualité avec passion, pour tous"
"BPX crea herramientas de calidad con pasión, para todos"



BPA TIMELINE

2023

FOUNDATION: A SOLID START,
SETTING UP OUR STANDARDS



2024

EXPANSION & REFINEMENT:
MORE STYLES, PRECISION,
SMOOTHER PERFORMANCE



2025

FRESH DROPS AND NEXT-LEVEL
KITS FOR EVERY STYLE PRO.



2026

OUR BOLD DESIGN SETTING
A NEW BENCHMARK FOR
GROOMING TOOLS



OUR BRAND STORY

Born in Ontario, Canada, BPX emerged to solve a long-standing challenge in the grooming industry: professionals were forced to choose between tools that were affordable but unreliable, or premium instruments that lacked accessibility and modern innovation.

The market needed precision without compromise. BPX was created to fill that gap.

With a fully integrated design studio and dedicated manufacturing in-house, BPX delivers rapid innovation and tools engineered with purpose. Our team brings decades of mastery across Design, Luxury Packaging, and Professional Grooming. Together, we shape tools that work for the artist behind them, supporting barbers, stylists, aestheticians, groomers, and spa experts who demand excellence from themselves and the instruments they rely on.

OUR VISION

To empower grooming and beauty professionals worldwide with innovative, stylish, and accessible tools that elevate skill, confidence, and creativity.

OUR MISSION

To design and engineer high-performance grooming instruments with precision, intention, and continuous innovation. Each BPX range is crafted to meet the evolving needs of professionals, reinforcing their technique, enhancing their workflow, and supporting their pursuit of mastery.

OUR SLOGAN

"BPX crafts quality tools with passion for All"

BPX Product Evolution Timeline

2023 — Foundation

Setting the Standard for Accessible, Purpose-Driven Tools. BPX began its journey by establishing a foundation of accessible grooming kits engineered for efficiency and ease of use. From compact Travel Kits to the original Master Kit, the focus was clear: equip emerging talent and grooming enthusiasts with reliable instruments that elevate their craft from day one.

This debut collection set the stage for BPX's commitment to quality, ergonomics, and user-focused design.

2024 — Professionalization

Responding to the needs of trained experts, BPX introduced the Professional Groomer's Series at Hairfest 2024.

Crafted in Japanese SUS420 stainless steel, this range delivered durability, sharpness, and balanced performance suited for salon and studio environments. Left-handed options and compact models made professional precision accessible to more artists, reinforcing BPX as a brand for working professionals.

2025 — Expansion and Refinement

With the growth of Aesthetics and Spa services, BPX expanded into premium foot-care tools and introduced a refined Aesthetics Kit for advanced users. The upgraded Barber's Master Kit 2.0, revealed at CIBEX 2024, delivered improved ergonomics and cutting performance for the modern grooming roster.

At Hairfest Level III 2025, BPX launched the Pro 200 Series: high-grade Japanese SUS420 scissors and thinning shears engineered for precision longevity, supported with professional care tools. The year closed with the debut of artistic sculpting razors and wooden handle razor variants, signaling BPX's commitment to creative versatility.

2026 — A New Era of Innovation

This Year marks a defining milestone for BPX with the introduction of the Swivel Series. Engineered for fluid motion cutting and advanced modern hairstyling techniques, the Swivel Series supports everything from structural cutting to dynamic texturizing. This collection was designed to enhance control, reduce wrist and shoulder strain, and help professionals achieve greater artistic refinement.

BPX will also unveil its redesigned digital platform, featuring a complete SKU library, improved navigation, and new educational content integrated across social channels.

Further expansions across both Hairdressing and Aesthetics Ranges strengthen BPX's role as a leader in ergonomic, performance driven grooming solutions.

As techniques evolve and expectations rise, BPX will remain at the forefront, designing instruments that meet the demands of the future while empowering every artist to elevate their craft.

KATACHI 400 SWIVEL SCISSORS

BPX Katachi 400 Swivel is forged from Japanese Stainless Steel SUS 440C for Longevity of Sharpness & Exceptional User Experience.

Article # BP-K4C-6



RAZOR SHARP BEVELED BLADE
Forged from Exceptional
Japanese SUS-440 C



ADJUSTABLE BALL BEARING SCREW
Providing Butter Soft Movement



TENSION ADJUSTMENT KEY
For adjustment of tension
to desired level.



**ERGONOMICALLY DESIGNED
THUMB RING & REST**
For Strain resistant and
variable Angular Movement



BPX Katachi 400 Swivel Cutting Scissors (Golden & Silver) comes with a complete Care Kit and is Forged from Japanese Stainless Steel SUS 440C for Longevity of Sharpness & Exceptional User Experience.

Article # BP-K4T-7



CHUNKY & SHARP THINNING TEETH
Forged from Exceptional
Japanese SUS-440 C



ADJUSTABLE BALL BEARING SCREW
Providing Butter Soft Movement



TENSION ADJUSTMENT KEY
For adjustment of tension
to desired level.



**ERGONOMICALLY DESIGNED
THUMB RING & REST**
For Strain resistant and
variable Angular Movement

BPX Katachi 400 Swivel Chunky Thinning Shears (Golden & Silver) comes with a complete Care Kit and is Forged from Japanese Stainless Steel SUS 440C for Longevity of Sharpness & Exceptional User Experience.

PRO 200 STYLING SCISSORS

BPX Pro 200 Styling Series is Forged from Japanese Stainless Steel SUS 420 for Sharpness, corrosion resistance & Premium User Experience.

Article # BP-P2C-6



RAZOR SHARP BEVELED BLADE
Forged from Premium
Japanese SUS 420



ADJUSTABLE BALL BEARING SCREW
Providing Smooth Movement



TENSION ADJUSTMENT KEY
For adjustment of tension
to desired level.



**ERGONOMICALLY DESIGNED
BENDED THUMB RING**
Supports a Strain Resistant
longterm Usage

BPX Pro 200 Cutting Scissor 6" (Silver) comes with a care Kit and is forged from Japanese Stainless Steel SUS 420 for Corrosion Resistance and Sharpness.

Article # BP-P2TS-6



SHARP MICRO TEETH EDGES
Forged from Premium
Japanese SUS 420



ADJUSTABLE BALL BEARING SCREW
Providing Smooth Movement



TENSION ADJUSTMENT KEY
For adjustment of tension
to desired level.



**ERGONOMICALLY DESIGNED
BENDED THUMB RING**
Supports a Strain Resistant
longterm Usage

BPX Pro 200 Thinning Shears 6" (Silver) comes with a care Kit and is forged from Japanese Stainless Steel SUS 420 for Corrosion Resistance and Sharpness.

Article # BP-P2C-7



BPX Pro 200 Cutting Scissor 7" (Silver) comes with a care Kit and is forged from Japanese Stainless Steel SUS 420 for Corrosion Resistance and Sharpness.

Article # BP-P2CL-7



BPX Pro 200 Cutting Scissor Left Handed 7" (Silver) comes with a care Kit and is forged from Japanese Stainless Steel SUS 420 for Corrosion Resistance and Sharpness.

Article # BP-P2C-7.5



BPX Pro 200 Cutting Scissor 7.5" (Silver) comes with a care Kit and is forged from Japanese Stainless Steel SUS 420 for Corrosion Resistance and Sharpness.

Article # BP-P2TS-7.5



BPX Pro 200 Thinning Shears 7.5" (Silver) comes with a care Kit and is forged from Japanese Stainless Steel SUS 420 for Corrosion Resistance and Sharpness.

PROFESSIONAL OFFSET SCISSORS

BPX Professional Series Instrumnets are Forged from Japanese Stainless Steel SUS 420, for Corrosion Resistance, Sharpness, making it a Tool of Value.

Article # BP-PC-6



RAZOR SHARP BLADE
Forged from Premium
Japanese SUS 420



TENSION ADJUSTMENT SCREW
For Manual Tension Adjustment
to desired level



BUFFERING EFFECT
Buffering to avoid noise
& to provide Comfort



FINGER REST
One Piece Forged
Finger Rest

BPX Professional Cutting Scissor 6" (Silver) is Forged from Japanese Stainless Steel SUS 420 for Corrosion Resistance & Sharpness, making it a tool of Value.

Article # BP-PTS-6



SHARP MICRO TEETH EDGES
Forged from Premium
Japanese SUS 420



TENSION ADJUSTMENT SCREW
For Manual Tension Adjustment
to desired level



BUFFERING EFFECT
Buffering to avoid noise
& to provide Comfort



FINGER REST
One Piece Forged
Finger Rest

BPX Professional Thinning Shears 6" (Silver) is Forged from Japanese Stainless Steel SUS 420 for Corrosion Resistance & Sharpness, making it a tool of Value.

Article # BP-PC-7



BPX Professional Cutting Scissor 7" (Silver) is Forged from Japanese Stainless Steel SUS 420 for Corrosion Resistance & Sharpness, making it a tool of Value.

Article # BP-PCL-7



BPX Professional Left Handed Cutting Scissor 7" (Silver) is Forged from Japanese Stainless Steel SUS 420 for Corrosion Resistance & Sharpness, making it a tool of Value.

Article # BP-PC-7.5



BPX Professional Cutting Scissor 7.5" (Silver) is Forged from Japanese Stainless Steel SUS 420 for Corrosion Resistance & Sharpness, making it a tool of Value.

Article # BP-PTS-7.5



BPX Professional Thinning Shears 7.5" (Silver) is Forged from Japanese Stainless Steel SUS 420 for Corrosion Resistance & Sharpness, making it a tool of Value.

PREMIUM BARBER SCISSORS

BPX Premium Barber Stainless-Steel Scissor is designed for versatile use. Titanium coated Corrosion Resistant Scissor Featuring sharp blades and a comfortable grip.

Article # BP-BC-6



Article # BP-BCL-6

LEFT HANDED
SCISSOR
IS ALSO
AVAILABLE
IN 6"



SHARP RAZOR EDGE BLADE
Long Lasting Titanium coated
Stainless steel



TENSION ADJUSTMENT SCREW
for Manual Adjustment of
tension to desired level



BUFFERING EFFECT
Buffering to avoid noise



FINGER REST
Removeable Finger Rest

BPX Premium Barber Cutting Scissor Single Packed 6" is forged from Premium Stainless Steel (Titanium Coated), for long term Corrosion Resistance.

Article # BP-BTS-6



PRECISE
SHARP TEETH

RAZOR EDGE
BLADE



SHARP TEETH EDGES
Long Lasting Titanium coated
Stainless steel



TENSION ADJUSTMENT SCREW
for Manual Adjustment of
tension to desired level



BUFFERING EFFECT
Buffering to avoid noise



FINGER REST
Removeable Finger Rest

BPX Premium Barber Thinning Shears Single Packed 6" is forged from Premium Stainless Steel (Titanium Coated), for long term Corrosion Resistance.

Article # BP-BC-6.5



BPX Premium Barber Cutting Scissor 6.5" is forged from Premium Stainless Steel (Titanium Coated), for long term Corrosion Resistance.

Article # BP-BTS-6.5



BPX Premium Barber Thinning Shears 6.5 " is forged from Premium Stainless Steel (Titanium Coated), for long term Corrosion Resistance.

Article # BP-BC-7.5



**Article #
BP-BCL-7**

LEFT HANDED
SCISSOR
IS ALSO
AVAILABLE
IN 7"

BPX Premium Barber Cutting Scissor 7.5" is forged from Premium Stainless Steel (Titanium Coated), for long term Corrosion Resistance.

Article # BP-BTS-7.5



BPX Premium Barber Thinning Shears 7.5 " is forged from Premium Stainless Steel (Titanium Coated), for long term Corrosion Resistance.

BARBER RAZORS

(SINGLE PACKED)

Article # BP-BRS



BPX Standard Metal Black Razor with a Precise Balance.

Article # BP-BAR-G



BPX Artist Sculpting Razor with Finger Ring for Exceptional Handling in Gold & Black Design.

Article # BP-BAR-R



BPX Artist Sculpting Razor with Finger Ring for Exceptional Handling in Red & Black Design.

Article # BP-BRW-6



BPX Wooden Rustik Handle Razor with Soft Wooden Touch & Precise Balance.

Article # BP-BLR



BPX H.Dynamic Skin Textured Lite Metal Razor comes with Ergo Safe Grip Making it a tool of Choice for Professionals.

NECK BRUSHES

(SINGLE PACKED)

Article # BP-MBS



BPX Wooden Master Neck Brush Black (Recommended for Master Kits)

Article # BP-SBB



BPX Barber Smart Neck Brush comes with Softer Bristles, washable and reusable. Designed with a Stand up Base for easy Handling.

Article # BP-BBS



BPX High Quality Wooden Neck Brush Black Standard with Imported Soft Bristles, Washable and Reusable.

Article # BP-BNB

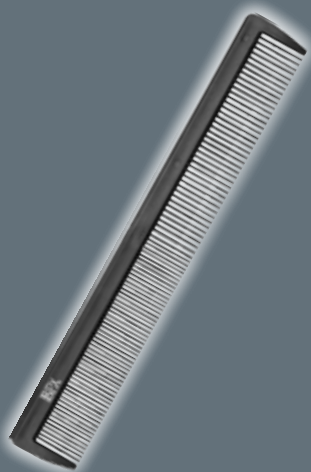


BPX High Quality Wooden Neck Brush Natural Brown Standard with Imported Soft Bristles, Washable & Reusable.

GROOMING TOOLS

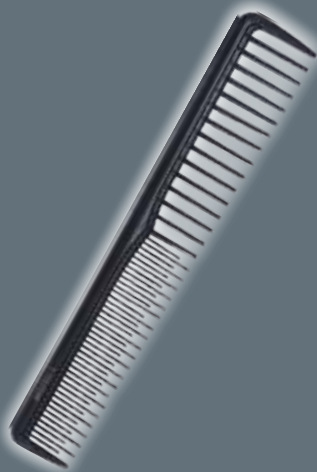
(SINGLE PACKED)

Article # BP-BCS



BPX Comb Black Standard Style # 1.

Article # BP-BC2



BPX Teasing Comb Black Style # 2.

Article # BP-BC3



BPX Professional Barber Comb Black Style # 3.

Article # BP-BC4

Professional Barber Comb in Grey Color is also available.

Article # BP-HSC



BPX Fine quality Hair Section Clips set with non-slip grip surface to ensure strong hair grip.

Article # BP-BCP

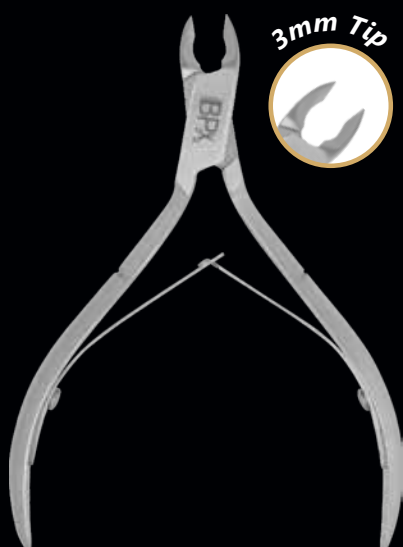


This barber cape is carefully crafted to make it comfortable and smooth to touch, making no stimulation to your skin, lightweight, static-proof and water-resistant.

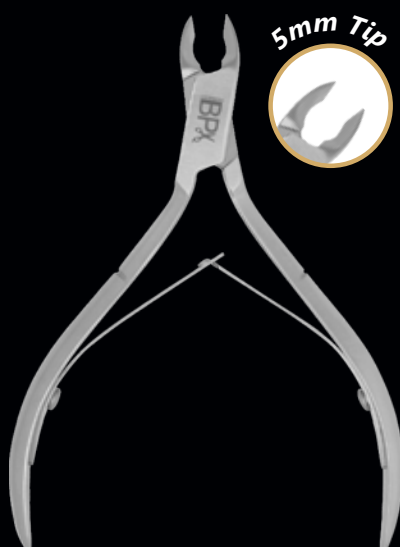
AESTHETIC & SPA TOOLS

(SINGLE PACKED)

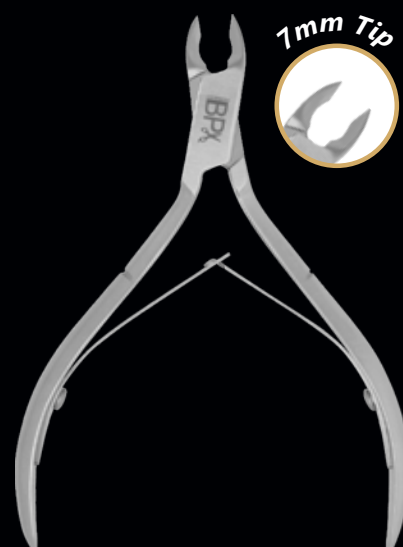
Article # BP-BCN-3



Article # BP-BCN-5



Article # BP-BCN-7

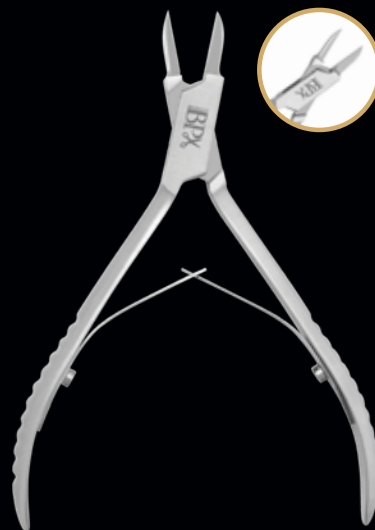


BPX Critically crafted Cuticle Nipper is forged from Premium Grade Stainless Steel for Long Life and sharp edges. Available in Quarter, Half & Full Jaw for a great purpose built user experience.

Article # BP-BNC-4.5



Article # BP-TNN-5



BPX Nail Clipper is forged from High Quality Stainless Steel for Long Life & sharp edges comes with Premium Corrosion Resistant Coating.

BPX Toe Nail Cuticle Nipper is forged from high quality stainless steel for Long life & sharp edges with Premium Corrosion Resistant Coating.

Article # BP-TNP-7



BPX Toe Nail Plier is forged from high quality stainless steel for Long life & sharp edges & specially designed for rough & thick nails. Comes with Premium Corrosion Resistant Coating.

Article # BP-ITN-6



BPX Cantiliver Heavy Ingrown Toe Nail Clipper is forged from high quality stainless steel for Long life & sharp edges & specially designed for thick & tough nails. Comes with Premium Corrosion Resistant Coating.

Article # BP-BCS-3.5



BPX Carefully crafted Curved Cuticle Scissor is made of Premium Grade Stainless Steel for Long Lasting and sharp edges.

Article # BP-BCS-3.75



BPX Carefully crafted Straight Cuticle Scissor is made of Premium Grade Stainless Steel for Long Lasting and sharp edges.

Article # BP-BNC



BPX Nail Clipper is forged from high quality stainless steel for long Lasting and to resist corrosion.

Article # BP-BTW-3.75



BPX Fine quality Stainless-Steel tweezers with non-slip grip surface ensuring greater precision, while the ultra-fine tips are ideal for accurate and easy tweezing.

Article # BP-BTS

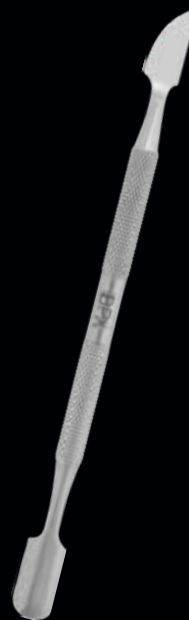


BPX Fine quality Color-Coated Stainless-Steel tweezers ensuring greater precision, while the ultra-fine tips are ideal for accurate and easy tweezing.

Article # BP-BCP-5



Article # BP-BCP-5.5



BPX Carefully crafted Cuticle Pusher is made of Premium Grade Stainless Steel for Long Lasting and sharp edges. It's a great tool for the Manicure needs. **BPX** Pusher sizes are: 5" (with Arrow head), 5.5" (with Arc).

Article # BP-BNF-4.3



BPX has crafted this Silver Steel Nail File for High Performance and long run use. It's a great tool for the Manicure needs.

Article # BP-BNF-4.5



BPX has crafted this Nail File with silicon grip for comfort and long run use. It's a great tool for the Manicure needs.

Barber Master Kit
Article # BP-MK-2.0



(8 Items, 7.5" Scissors Set & Complimentary Cape).

Barber Master Kit
Article # BP-MK-007



(7 Items, 6.5" Scissors Set & Complimentary Cape).

BPX Barber's Master Kit includes all the basic tools for Grooming & Trimming Requirements in a Carefully Designed Compact Box, Easy to Carry. This Set Comes with a BPX Branded Soft Black Cape.

Gua Sha Massage Kit
Article # BP-GMS-005



BPX has crafted these Gua Sha Massage tools keeping in view the Softness of Edges and Ergonomics of the Tools to Deliver an Enhanced Massage Experience.

Aesthetic Kit
Article # BP-ASK-006



Article #
BP-ASKP-006



*Aesthetic Kit is also
 Available in Pink Color*

Article #
BP-ASKB-006



*Aesthetic Kit is also
 Available in Black Color*

**BPX has Claubbed the Basic Professionally required
 Aesthetic Instruments in a Smart Set, to provide a
 great Experience.**

Barber Smart Kit
Article # BP-SK-003



**BPX Smart Kit includes the basic tools for personal
 grooming and trimming in a customized leather pouch
 which is easy to carry.**

PACKAGING

BPX provides following types of packaging along with instruments.

RIGID BOX PACKAGING

BPX provides rigid box packaging for Barber Master Kit, Katachi 400 Swivel, Pro 200 Styling & Professional Offset Scissors. BPX uses imported Eva & Imported premium quality velvet.



BLISTER PACKAGING

BPX provides recyclable & environment friendly blister packaging for single piece items.



LEATHER POUCH PACKAGING

BPX provides premium Leather pouches for Kits, which is easy to carry & Light weight,



WOODEN DISPLAY STAND







"BPX crafts quality tools with passion for All"
"BPX crée des outils de qualité avec passion, pour tous"
"BPX crea herramientas de calidad con pasión, para todos"



**Claux Five INC is the sole Master Distributor of
"BPX products in North American Region.**

CONTACT US


  +1-647-869-5482

 Business@clauxfive.com

 www.barprox.com

  +1-437-777-2287

 sales@clauxfive.com

 3525 Kariya Drive, Mississauga, Ontario.